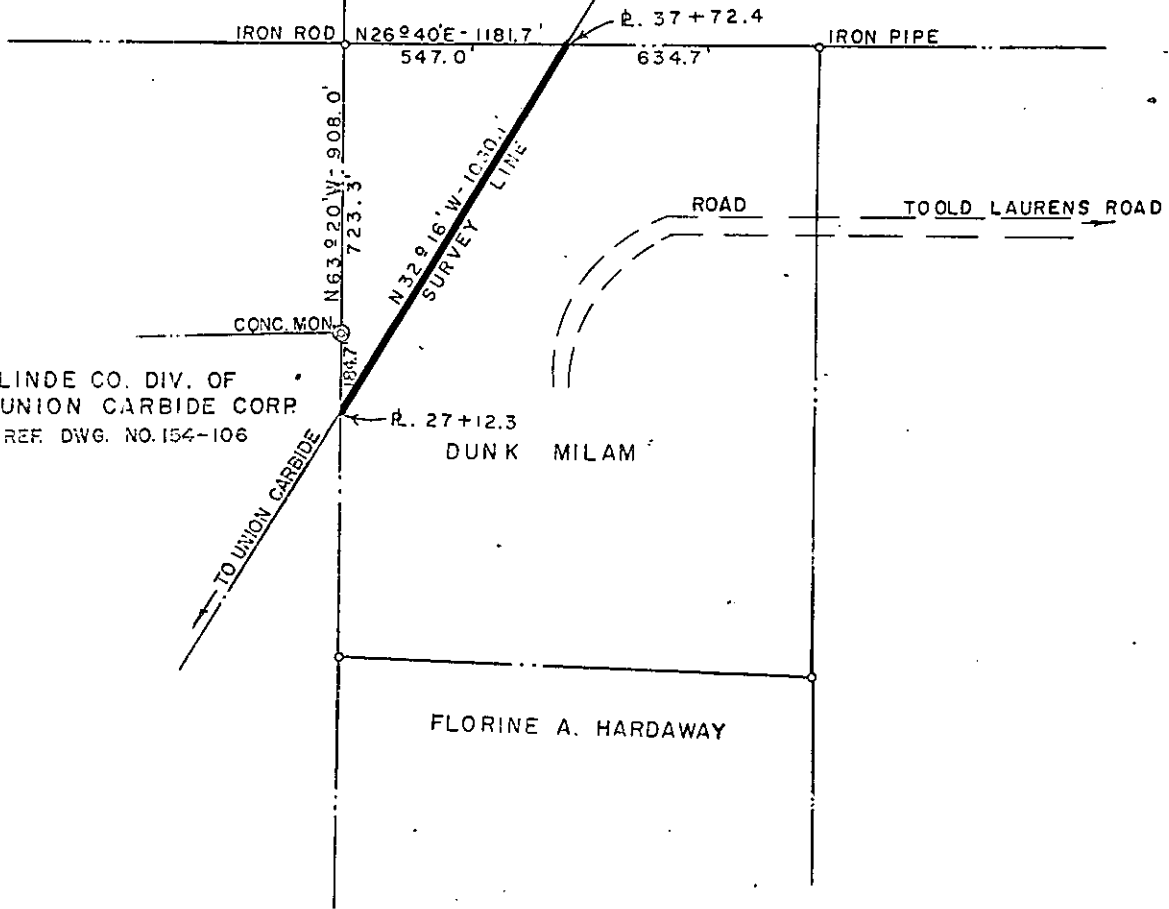


GEORGE A. KING
REF. DWG. NO. 26-59



DUKE POWER COMPANY
 UNION CARBIDE-LOUIS ALLIS-MAULDIN
 TRANSMISSION LINE
 CROSSING PROPERTY OF
 DUNK MILAM
 NEAR SIMPSONVILLE, S. C.
 AUSTIN TOWNSHIP
 GREENVILLE COUNTY.

Recorded June 10, 1964 At 12:18 P.M. # 34965

SCALE: 1" = 400'
BOOK NO. 641

APRIL 7, 1964
FILE NO. 26-61